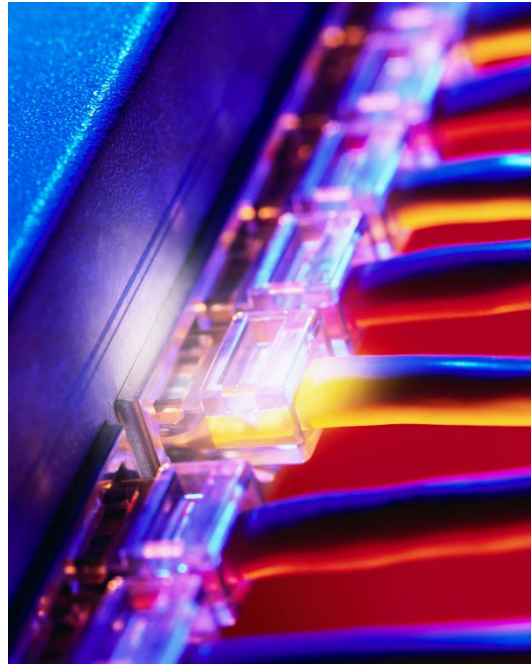


Front SMS Gateway API

Product Description for the connection
between the SMS gateway and customer



Applies to:
SMS Gateway API

Development Manual
V3.04 – 2024-06-05



Gateway – Interface Description

Front offers SMS Gateway with http-based interface. By sending HTTP-based commands, the customer can send and receive messages via the Front's message service / gateway to an end user's mobile or an application.

Contents:	Page
1 Account	
1.1 Users.....	3
1.2 Setup - SMS Gateway API.....	3
2 Parameter Index	
2.1 Outbound messages.....	4
2.2 Error codes sending texts.....	7
2.3 Delivery Status for sent texts.....	9
2.4 Outbound messages – bulk.....	10
2.5 Incoming messages.....	15

1 Account

1.1 Users

When ordering, you will receive an invitation to an administrator user for the WEB interface. Once you have created this, you will be given the choice to invite more users. If you have your own developer or development team, you can invite them as "Administrator" so that they have access to setting up the SMS Gateway API and can set this up as desired. The page is in both Norwegian and English.

You can also find product information at <https://fro.no/gw-productdescription> (Norwegian) and at <https://fro.no/gw-productdescription> (English).

1.2 Set up - SMS Gateway API

Authentication

Under the API settings, you will find examples of JSON and HTTP GET requests.

There is also information about the user identification to be used (Service ID).

You can choose whether you want to authenticate by IP address(es) or create a password.

URL for status and incoming

You can set up the desired URL for status messages. This is not mandatory but allows receiving feedback if messages are delivered to the recipient's mobile phone, and possibly other status messages received from the carriers.

To support receiving SMS or replies, you must set up the URL where you wish to receive these.

Notifications for error messages

You can set up one or more email addresses for receiving error messages. We recommend this especially in the initial phase/development phase, as these messages provide useful information about the cause of the error (error codes).

There are separate notifications for errors while sending text messages and errors delivering received text messages to your server. For incoming notifications where we cannot deliver messages, the messages will be queued. The notifications will include a link to restart the queue once the problem is solved.

Security measures

NB: If the functionality to generate an SMS is on a publicly available, we recommend implementing security measures. Examples are solutions where you enter a mobile number to receive a one-time code or other information.

This is to prevent malicious robots from mass sending messages via your account.

We have customers who have been exposed to this with traffic to various countries. We therefore recommend setting up logic to limit the risk of such attacks that often come from geographical locations, with many requests from the same IP addresses, or unusually high traffic to countries you do not operate in. reCAPTCHA in combination with other measures (limitations) might be a solution to consider.

2 Parameter INDEX

2.1 OUTBOUND MESSAGES

Texts may be sent by either performing by performing a HTTP POST request with a JSON document containing the parameters below or a HTTP GET request to the SMS Gateway including the parameters in the query string.

Parameter	Description	Accepted values	Comment
serviceid	Server identifier	Unique customer ID	Required
phoneno	Telephone number for the recipient.	International phone number with country code 004799999999 or +4799999999	Required
txt	The message being sent.	Text containing only characters in the GSM character set (GSM 03.38). Other characters are replaced. If the "unicode" parameter is supplied, all Unicode characters are accepted.	Required. A message consists of 160 characters (Unicode: 70). If a message contains more, it counts as multiple SMS. Each SMS is then a length of 153 characters (Unicode: 67). Max is 1530 characters.
fromid	Unique Sender ID	An assigned number / serial number of Front or assigned sender text, maximum 11 characters.	Required - Unique number to receive a response or text.
price	Premium (overcharged) messages	In Norwegian cents (øre). Eg. NOK 1=100, NOK 30=3000. Must be activated by the Front!	Optional. When a valuation is set, fromid must be "2401"; max 160 characters in the text. Can only be sent to Norwegian phone numbers.
unicode	Allow sending of Unicode texts	true, false	Optional. By default, all texts are sent using the GSM character set (GSM 03.38), and non-supported characters are converted. When "unicode" is true, all characters (emoji, etc.) are allowed, and no conversions are applied. The text will only be sent as Unicode if it contains characters not found in the GSM character set.
encoding	URL percent encoding character set	iso-8859-1, utf8, utf-8	Optional. Default character set is latin1 (ISO-8859-1). Note: most modern HTTP libraries perform UTF-8 percent encoding by default. (This parameter is not used for JSON requests, as JSON is always encoded as UTF-8).
ref	Your ID or reference	text, max 100 characters or an integer	Optional. If ref is included in the request, the ref and phoneno will be included in the delivery status report
scheduled	Date and time to send the text	ISO 8601 datetime, eg. 2024-01-30T14:40:00Z	Optional. Must be in the future Default value: immediate. UTC is assumed if no time zone is supplied.
validity	Validity period in minutes	positive integer	Optional. Default value: 1 week in minutes. Validity period is how long the carrier should attempt to deliver the text before failing when the recipient is not connected to the mobile network (phone turned off, no coverage, SIM card removed, etc.). The carrier's maximal validity period is used when it is shorter than the supplied value.
flash	Flash message	true, false	Optional. Default value: false. Attempt to send the text as Flash SMS that is displayed directly on the main screen without user interaction. Not supported by all carriers.

Parameter	Description	Accepted values	Comment
protocolid	GSM Protocol Identifier (TP-PID)	0 - 255	Optional. Default value: 0. Attempt to send with GSM Protocol Identifier (TP-PID) , which can be used to set Replace Type 1-7 (65-71), for example.

2.1.1 Send Text Examples using HTTP POST with a JSON document

Example of sending a text using HTTP POST with a JSON document:

```
POST /psk/push.php HTTP/1.1
Host: www.pling.as
Content-Type: application/json
```

```
{
  "serviceid": 3,
  "fromid": "26114123450000",
  "phoneno": "004799999999",
  "txt": "Test æøå ÆØÅ",
  "unicode": false
}
```

Example of sending a text containing an emoji:

```
POST /psk/push.php HTTP/1.1
Host: www.pling.as
Content-Type: application/json
```

```
{
  "serviceid": 3,
  "fromid": "26114123450000",
  "phoneno": "004799999999",
  "txt": "Test 🚫",
  "unicode": true
}
```

Example sending a text with all parameters:

```
POST /psk/push.php HTTP/1.1
Host: www.pling.as
Content-Type: application/json
```

```
{
  "serviceid": 3,
  "fromid": "26114123450000",
  "phoneno": "004799999999",
  "txt": "Test 🚫",
  "unicode": true,
  "ref": "3d56c6bd-ffcc-49bb-a815-81b21f082606",
  "scheduled": "2024-01-30T13:50:00Z",
}
```

```
"validity": 60,  
"flash": false,  
"protocolid": 0  
}
```

Example success response when using HTTP POST with a JSON document:

```
{  
  "id": 145099,  
  "errorcode": 0,  
  "description": "OK"  
}
```

Example error response when using HTTP POST with a JSON document:

```
{  
  "id": 0,  
  "errorcode": 1,  
  "description": "Invalid mobile number"  
}
```

See §2.2 for a list of error codes.

2.1.2 Send Text Examples using HTTP GET

Example of sending a text using HTTP GET with latin1 percent encoding:

```
http://www.pling.as/psk/push.php?serviceid=1234&phoneno=004799999999  
9&fromid=26114123450000&txt=Test%20%E6%F8%E5%20%C6%D8%C5
```

Example of sending a text using HTTP GET with UTF-8 percent encoding:

```
https://www.pling.as/psk/push.php?serviceid=1234&encoding=utf8&phon  
eno=0047999999999&fromid=26114123450000&txt=Test%20%C3%A6%C3%B8%C3%A  
5%20%C3%86%C3%98%C3%85
```

Example of sending a text containing an emoji using HTTP GET with UTF-8 percent encoding:

```
https://www.pling.as/psk/push.php?serviceid=1234&encoding=utf8&unic  
ode=true&phoneno=0047999999999&fromid=26114123450000&txt=Test%20%F0%  
9F%A4%A3
```

Example of sending a text with all parameters:

```
https://www.pling.as/psk/push.php?serviceid=1234&encoding=utf8&unic  
ode=true&phoneno=0047999999999&fromid=26114123450000&txt=Test%20%F0%  
9F%A4%A3&ref=987654321&valdity=60&flash=false&protocolid=0&schedule  
d=2024-01-30T15%3A30%3A00Z
```

Note: the order of the parameters has no significance.

Example response:

```
ErrorCode=0, ID=145099
```

See §2.2 for a list of error codes.

2.2 ERROR CODES SENDING TEXTS

When sending the text, the SMS Gateway returns a response to the text you submit. This response consists of an "error code" number and a unique reference ID.

Error code	Description
errorcode=0	OK (Message is sent)
errorcode=1	Illegal mobile number
errorcode=2	Message sent from illegal IP address
errorcode=3	Invalid fromid
errorcode=4	Illegal value SMS
errorcode=5	No remaining SMS messages on account
errorcode=6	Not access to premium (overcharged) texts
errorcode=7	Your account has been blocked by Front, or incorrect serviceid
errorcode=8	serviceid is blank / parameter is missing
errorcode=9	phoneno is blank / missing parameter
errorcode=10	txt is blank / missing parameter
errorcode=11	fromid is blank / missing parameter
errorcode=12	Illegal mobile number premium (overcharged) text
errorcode=13	Invalid password
errorcode=14	The message is too long (max 1530 characters)
errorcode=15	The premium message is too long (max 160 characters). Only relevant for premium messages (price > 0)
errorcode=16	The message contains an invalid character. The message can only contain characters in the GSM character set (GSM 03.38). Error code only in use for bulk messages (§2.4).
errorcode=17	Duplicate message. Message with same fromid, phoneno and txt has been sent within the last 120 seconds.
errorcode=18	Encryption required. Use https instead of http.
errorcode=19	Invalid value for the encoding parameter
errorcode=20	The unicode parameter must be "true" or "false"
errorcode=21	Mobile number is blacklisted. The mobile number is known to be invalid for receiving SMS or has been previously seen in connection with misuse.
errorcode=22	flash parameter must be "true" or "false"
errorcode=23	protocolid must be an integer between 0 and 255
errorcode=24	validity must be a positive integer
errorcode=25	ref cannot exceed 100 characters
errorcode=26	scheduled must be an ISO 8601 formatted datetime in the future
errorcode=27	group must be the name of a contact group containing at least one contact

Please note that new error codes may be added in future versions.

2.3 DELIVERY STATUS FOR SENT TEXTS

Status of sent messages will be continually posted to the URL that you wish to receive on. The service is not compulsory, but for those who desire it.

Sample status:

Parameter	Description	Legal Values	Comment
status	New status on SMS	-1, 4, 5	See below
origid	ID Reference Number	Same number as confirmation ID when the message was sent	Unique number for each text message
ref	Your reference	text up to 100 characters	The "ref" that was supplied when the text was sent
phoneno	Mobile number the text was sent to	E164 phone number	Only included when "ref" was supplied

<https://customer.no/sms?status=4&origid=14509>

Sample status with ref:

<https://customer.no/sms?status=4&origid=14509&ref=abc&phoneno=%2B4799999999>

Status -1:

The message is received by the carrier but not delivered to the mobile phone. Note: this status can come after status 4 if the message is delivered immediately.

Status 4:

The message has been received by the recipient's mobile phone. It is not known whether the recipient has read the message

Status 5:

The message has failed. In most cases this is due to that sending a message to a mobile phone number not in use. May also occur due to operational errors among telecom operators.

Lack of status means that the message is on its way. The most common reason for not attaining the status is that the recipient has turned off his cell phone, or located in an area without coverage. It happens that one does not get any status even if the message is actually delivered.

2.4 OUTBOUND MESSAGES – BULK

To send a text message to multiple recipients, use an HTTP Post to the following URL:
https://www.pling.as/psk/push_bulk.php

The request body must be a valid JSON document (<http://json.org>) with the following structure:

Parameter	Description	Allowed values	Comment
serviceid	Server identifier	Unique customer ID	Required; number
phoneno	Recipients' mobile numbers.	International telephone number with country code. 004799999999	Optional; string array; One of "phoneno" and "group" is required
group	Contact group name	Exact name of a contact group containing at least one active contact.	Optional; string; One of "phoneno" and "group" is required
txt	Message text to be sent	Text containing only characters in the GSM character set (GSM 03.38).	Required. A message consists of 160 characters. If a message contains more, it counts as multiple SMS. Each SMS is then a length of 153 characters. Max is 1530.
fromid	Unik avsender ID	An assigned number / serial number from Front or assigned sender text, maximum 11 characters.	Required; string
unicode	Allow sending of Unicode texts	true, false	Optional; boolean. By default, all texts are sent using the GSM character set (GSM 03.38), and texts with non-supported characters are rejected. When "unicode" is true, all characters (emoji, etc.) are allowed. The text will only be sent as Unicode if it contains characters not found in the GSM character set.
ref	Your ID or reference	text, max 100 characters or an integer	Optional. If ref is included in the request, the ref and phoneno will be included in the delivery status report
scheduled	Date and time to send the text	ISO 8601 datetime, eg. 2024-01-30T14:40:00Z	Optional. Must be in the future Default value: immediate. UTC is assumed if no time zone is supplied.
validity	Validity period in minutes	positive integer	Optional. Default value: 1 week in minutes. Validity period is how long the carrier should attempt to deliver the text before failing when the recipient is not connected to the mobile network (phone turned off, no coverage, SIM card removed, etc.). The carrier's maximal validity period is used when it is shorter than the supplied value.
flash	Flash message	true, false	Optional. Default value: false. Attempt to send the text as Flash SMS that is displayed directly on the main screen without user interaction. Not supported by all carriers.
protocolid	GSM Protocol Identifier (TP-PID)	0 - 255	Optional. Default value: 0. Attempt to send with GSM Protocol Identifier (TP-PID) , which can be used to set Replace Type 1-7 (65-71), for example.

The server will accept the request as long as there is at least one valid recipient, and the other parameters are valid.

The server responds with HTTP status code 201 (created) if the message has been accepted. All other status codes indicate that the message was not accepted, and the message will not be sent. The response body includes an error code, description and lists with any invalid or duplicate mobile numbers as a JSON document.

Examples

Example bulk request:

```
{
  "serviceid": 1234,
  "phoneno": ["004799999999", "004799999998"],
  "txt": "Test æøå ÆØÅ",
  "fromid": "My Company"
}
```

Example bulk request with emoji:

```
{
  "serviceid": 1234,
  "phoneno": ["004799999999", "004799999998"],
  "txt": "Test 🎨",
  "unicode": true,
  "fromid": "My Company"
}
```

Example bulk request with all parameters:

```
{
  "serviceid": 1234,
  "phoneno": ["004799999999", "004799999998"],
  "txt": "Test 🎨",
  "unicode": true,
  "fromid": "Mitt Firma",
  "ref": "3d56c6bd-ffcc-49bb-a815-81b21f082606",
  "scheduled": "2024-01-30T13:50:00Z",
  "validity": 60,
  "flash": false,
  "protocolid": 0
}
```

Example response body:

```
{
  "errorcode": 0,
  "description": "OK",
}
```

```

    "invalidPhoneno": [],
    "duplicatePhoneno": []
}

```

Please note that the response does not include a reference number (ID) for the messages that will be sent. Please include a "ref" with bulk outbound messages to receive delivery status reports that contain a "ref" and "phoneno" to identify the text. (see §2.2 - 2.3).

2.5 INCOMING MESSAGES (ONLY GATEWAY PROFF and PSK)

The SMS Gateway can be configured at <https://login.pling.as/pling/gateway> (login required). The URL where received texts are delivered can be configured there, along with the API to be used. To ensure optimal security and comply with privacy regulations, we recommend that the URL uses HTTPS and only accepts requests from Front's SMS Gateway IP addresses (currently 18.197.36.176, 18.197.110.183 and 18.197.138.46).

2.5.1 INCOMING MESSAGES – HTTP POST JSON API

When the HTTP POST JSON API is configured, incoming messages are delivered to the configured URL as a JSON document using HTTP POST.

Message JSON

The message is posted as a JSON document (<http://json.org/>) with the following fields:

Parameter	Type	Description
id	Number	Front's unique identifier for the message
to	String	Telephone number to which the message was sent in either E164 format (e.g. "+47594400"), national format for short code (e.g. "26114") or short code with sub-number (e.g. "26114123456789")
from	String	Telephone number from which the message was sent in E164 format (e.g. "+47999999999"). In rare instances this can be a nationally formatted number (e.g. "26114") or a text (e.g. "HelloWorld") of up to 11 characters.
text	String	The message body. In the case of a multimedia message, the subject (if present) and any plain text files included in the message will be concatenated with a newline separator to form the text. Refer to SMIL file for the proper display of the individual text files.
sent	String	The ISO 8601 formatted timestamp when the message was sent or first received by Front (e.g. "2020-12-31T23:59:59Z")
counter	Number	A counter value that is incremented for each message received at your SMS Gateway. This can be useful for detecting missing messages, etc.
keyword	String	The first word in the message, which is often used when routing messages sent to a short number to the appropriate recipient.
files	Array	The files included in a multimedia message (MMS). See below for the definition of the file object. This is an empty array for a normal text (SMS). *

* Please note that support for multimedia messages (MMS) is an additional service that is not enabled by default on your account. In this case, the "files" field can be safely ignored, including the File JSON definition below. Please contact Front if you require MMS functionality.



File JSON

Each file in the files array consists of an object with following fields:

Parameter	Type	Description
id	Number	Front's unique identifier for the file
contentType	String	The MIME type of the file as specified in the MMS
fileName	String	The file name as specified in the MMS
fileData	String	The file's binary data: Base64 encoding.

Expected Response

Any HTTP response sent with a 2xx (success) status code will be interpreted as successful delivery of the message. For example, 200 (OK), 201 (Created), 202 (Accepted) and 204 (No Content) are all acceptable HTTP Status codes.

An HTTP response sent with any other status code is considered an unsuccessful delivery of the message. Also, the lack of a response within 60 seconds is treated as a timeout and is also considered an unsuccessful delivery.

Examples

Example of a text (SMS) received at short code:

```
{
  "id": 999999,
  "to": "26114",
  "from": "+4799999999",
  "text": "Test 123",
  "sent": "2019-12-31T23:59:59Z",
  "counter": 7166,
  "keyword": "TEST",
  "files": []
}
```

Example of a multimedia message (MMS) received at long code:

```
{
  "id": 999999,
  "to": "+4759440000",
  "from": "+4799999999",
  "text": "Test 123",
  "sent": "2019-12-31T23:59:59Z",
  "counter": 7166,
  "keyword": "TEST",
  "files": [
    {
      "id": 4747,
      "contentType": "text/xml;Name=smil.xml;Charset=UTF-8",
      "fileName": "smil.xml",
      "fileData": "PD94bWwgdmVyc2lvbj0iMS4wIj48c21pbD..."
    },
    {
      "id": 4748,
```

```

"contentType": "text/plain;Name=text_75329.txt;Charset=UTF-8",
"fileName": "text_175329.txt",
"fileData": "VGVzdCAxMjM="
},
{
  "id": 4749,
  "contentType": "image/jpeg;Name=image01.jpg",
  "fileName": "image01.jpg",
  "fileData": "w4PCv8ODwpjDg8K/w4PCoAAQSkZJRgABAQ..."
}]
}

```

2.5.2 INCOMING MESSAGES – HTTP GET API

When the HTTP GET API is configured, incoming messages are delivered to the configured using an HTTP GET request with the message data as query string values. The parameter values are percent encoded using the latin1 (ISO-8859-1) character set. Characters that cannot be encoding as latin1 are converted to "?" before being encoded.

The following parameters are used in the HTTP GET API for incoming messages:

Parameter	Description
fromid	Telephone number to which the message was sent in either as an international number (e.g. "47594400"), a short code (e.g. "26114") or the sub-number for short code with sub-number (e.g. "123456789" for "26114123456789")
phonenr	Telephone number from which the message was sent in international format with leading zeros (e.g. "004799999999"). In rare instances this can be a nationally formatted number (e.g. "26114") or a text (e.g. "HelloWorld") of up to 11 characters.
txt	The text of the message
time	Time message was received, unix code
countnr	A counter value that is incremented for each message received at your SMS Gateway. This can be useful for detecting missing messages, etc.
code	The first word in the message, which is often used when routing messages sent to a short number to the appropriate recipient.

The expected response for a successfully processed request is the text:

```
true
```

Example of an incoming message using the HTTP GET API:

```
https://www.customer.no/innkommende/?fromid=123450000&phonenr=004799999999&txt=Test%20%E6%F8%E5%20%C6%D8%C5&time=1077181484&countnr=157&code=TEST
```

3 Document History

v2.20 (2016-19-06): OUTBOUND MESSAGES – BULK added.

v2.21 (2017-03-15): DELIVERY STATUS OF OUTGOING PUSH MESSAGES updated with correct max length for error code 14. Error code 15 and 16 added.

v2.22 (2017-03-15): Duplicate message check. New SMS Gateways will be configured with a duplicate message check. Information about error code 17 added.

v2.23 (2020-03-09): Increased maximum length for message text to 1024 characters.

v2.24 (2020-04-29)

- Improved descriptions in section 1
- Added support for HTTP POST of JSON document when sending single text
- Added unicode parameter to allow sending Unicode texts
- Added encoding parameter when sending texts using HTTP GET
- Added more examples of sending texts
- Added information about error codes 18, 19, 20
- Added HTTP POST JSON API for incoming messages
- Improve description of the parameters for the HTTP GET API for incoming messages

v2.25 (2021-12-15): New error code when mobile number is blacklisted.

v2.26 (2022-02-01): Remove mobile number from registration form

v3.02 (2023-07-11)

- Added ref, scheduled, validity, flash and protocolid to outbound messages.
- Added ref and phoneno to delivery status reports (only when ref is supplied when sending)

V3.03 (2023-08-17): Increased maximum length for message text to 1530 characters.

V3.04 (2024-06-05): Added group to bulk outbound messages.